

ICBVS24

FEATURES

- Chamber vacuum seal liquids and fragile foods
- Pair with Wolf ovens or steamer module for easy meal prep
- Stainless, black glass, or custom panel options in 60cm or 76cm widths
- Seal wine and other rigid containers with included accessory
- Exceptional support from our Customer Care team
- Rigorously tested for decades of use

ACCESSORIES

- 60cm Black Glass Front Panel
- 60cm Stainless Front Panel
- 76cm Black Glass Front Panel
- 76cm Stainless Front Panel
- Integrated Front Panel
- Large Bags - 240mm x 350mm
- Small Bags - 180mm x 280mm
- Wine Stoppers

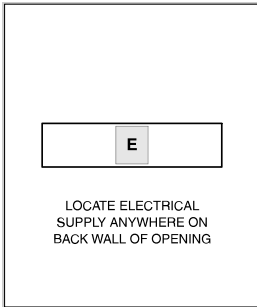
Accessories available through an authorized dealer.
For local dealer information, visit subzero-wolf.com/locator.



PRODUCT SPECIFICATIONS

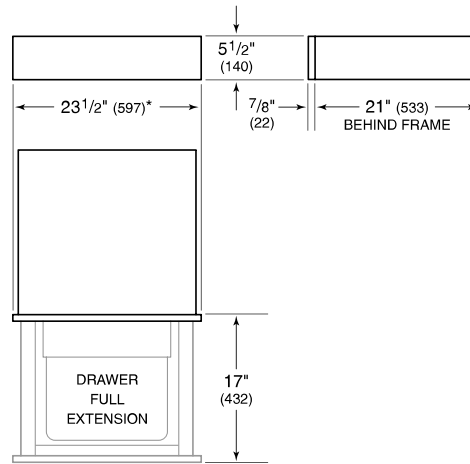
Model	ICBVS24
Capacity	7 L
Electrical Supply	220-240 V AC, 50/60 Hz
Electrical Service	325 W
Power Cord Length	1 Meters
Receptacle	220-240 V AC, 50/60 Hz

ELECTRICAL



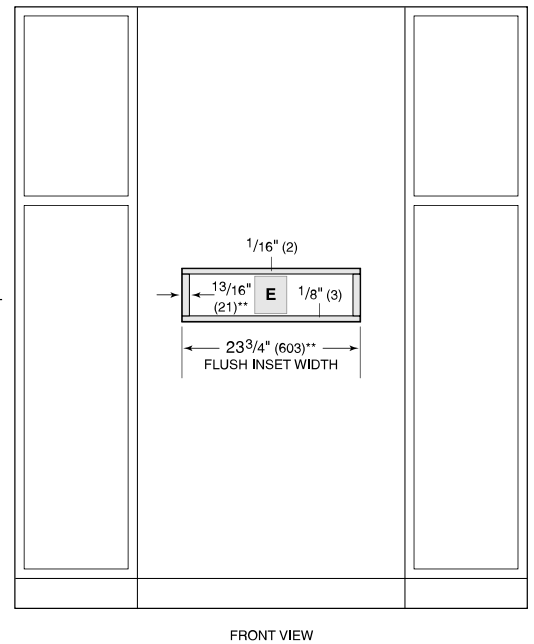
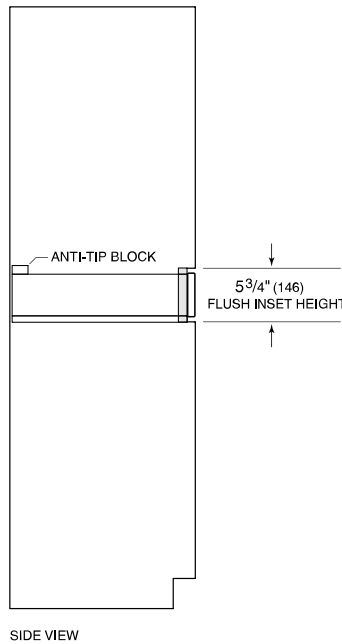
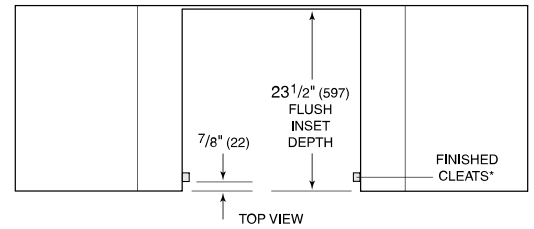
NOTE: Dimensions in parenthesis are in millimeters unless otherwise specified

DIMENSIONS



*29 7/8" (759) width for 30" panel.

FLUSH INSTALLATION



*Will be visible and should be finished to match cabinetry.
 **30 1/8" (765) width and 4" (102) cleat dimension for 30" panel.

NOTE: Flush inset width and height dimensions provide minimum reveals.