

ICBBI-36UID/S



FEATURES

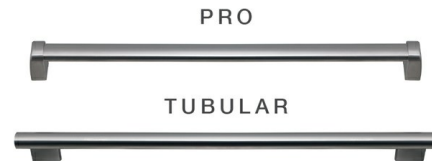
- _____ Rigorously tested to ensure decades of use
- _____ Exceptional support from Customer Care team
- _____ LED Lighting for brighter interior
- _____ Dual refrigeration keeps food fresher longer
- _____ Air purification system fights spoilage, odours
- _____ Microprocessor control assures peak performance
- _____ Crispers and deli drawers in low-temp, high-humidity zones for optimum freshness
- _____ Over-and-under refrigerator/freezer storage
- _____ Freshness cards for maximum food preservation
- _____ Magnetic door seal system locks in cold air
- _____ Automatic ice maker with "max ice" feature
- _____ Adjustable shelves for maximum convenience
- _____ Discreet interior water dispense with advanced filtration

ACCESSORIES

- _____ Grilles for 2108 mm or 2235 mm finished height (2134 mm is standard)
- _____ Dual installation kit with or without dual wide grille - 2134 mm finished height
- _____ Accessories are available through an authorized dealer.
For local dealer information, visit subzero-wolf.com/locator.



HANDLE OPTIONS



PRODUCT-DETAILS

REFRIGERATOR

- Internal water dispenser
- 3 Adjustable glass shelves
- 1 High-humidity drawer with dividers
- 1 Storage drawer with dividers
- 2 Adjustable door shelves
- 1 Stationary door shelf
- Adjustable dairy compartment
- Air purification system

FREEZER

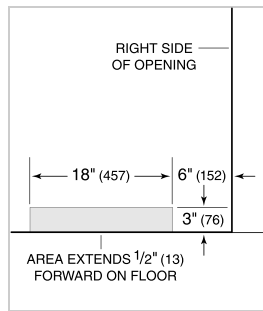
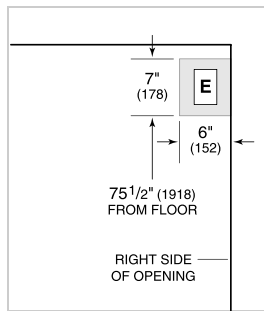
- Automatic ice maker
- Full-extension roll-out freezer drawer
- Two-tier wire storage baskets
- Water filtration system

PRODUCT-SPECIFICATIONS

model	ICBBI-36UID/S
dimensions	914mmW x 2134mmH x 610mmD
door-clearance	946mm
drawer-clearance	600mm
weight	234 kg
refrigerator-capacity	493 L
refrigerator-storage-capacity	428 L
freezer-capacity	157 L
freezer-storage-capacity	142 L
electrical-supply	220-240 VAC; 50/60 Hz
electrical-service	≤ 4 A
receptacle	3-prong grounding-type

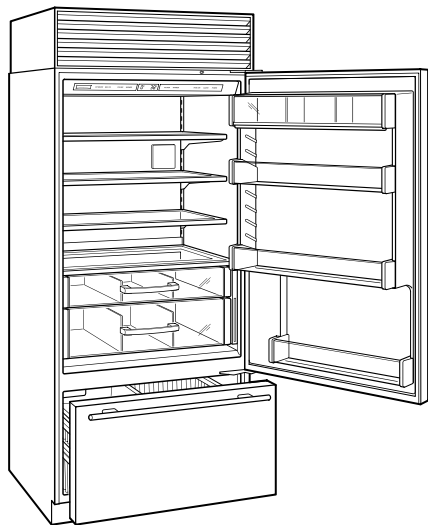
ELECTRICAL

PLUMBING



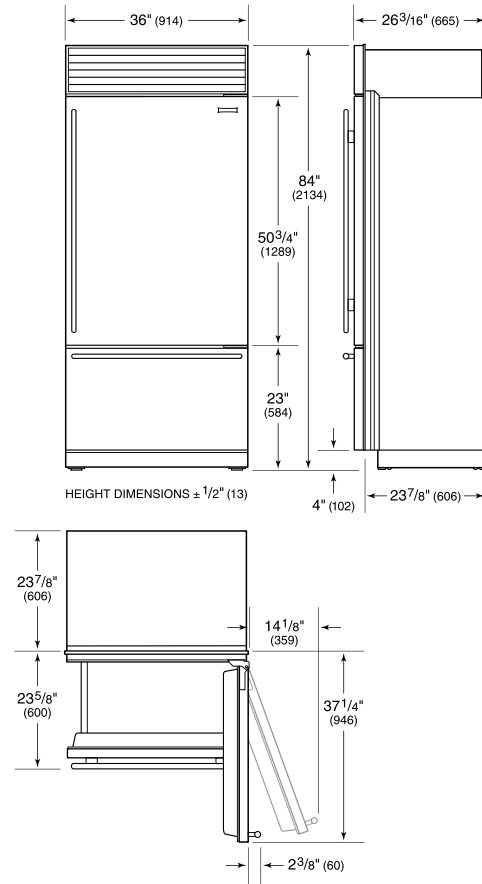
NOTE: Dimensions in parenthesis are in millimeters unless otherwise specified

INTERIOR-VIEW

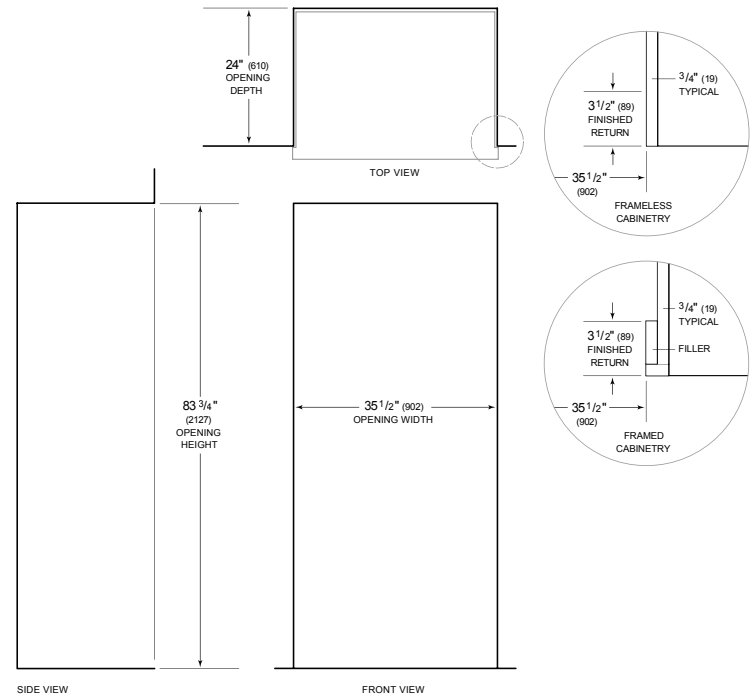


This illustration is intended for interior reference only and may not represent the exterior of the model being specified.

DIMENSIONS



STANDARD INSTALLATION



NOTE: 3 1/2" (89) finished returns will be visible and should be finished to match cabinetry. Shaded line represents profile of unit.